

FACADE ACCESS



SAYFAGROUP.CO.UK

SAYFA 

EDGESEIL™

ABSEIL RAIL SYSTEM

ABSEIL RAIL SYSTEM FOR FACADE ACCESS AND HEIGHT SAFETY

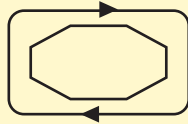
The EdgeSeil™ rail system (patent pending) is an innovative abseil rail system that allows the users continuous horizontal and vertical access across the building facade.

EdgeSeil™ Abseil rail is a flexible system that wraps around the building edge, allowing uninterrupted access across the facade with multiple users at one time.

It has low visual impact compared to other systems and with RAL colour matching it can blend with the facade.

2x

FASTER TO
OPERATE THAN
OTHER SYSTEMS



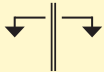
CONTINUOUS
VERTICAL AND
HORIZONTAL ACCESS



THIRD PARTY
APPROVED AND
TESTED



3 USER SYSTEM - TESTED TO
27KN



IDEAL FOR INTERNAL
AND EXTERNAL USE



CLEANER LESS CLUTTERED
ROOF TOP



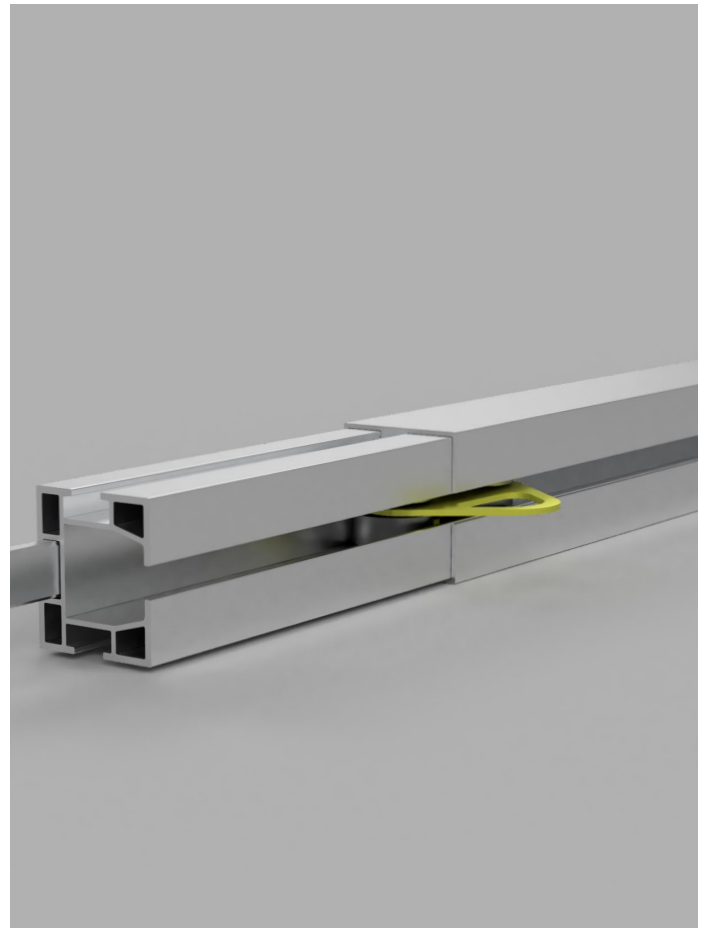
FLEXIBLE DESIGN TO SUIT
ANY BUILDING LAYOUT



LOW VISUAL IMPACT AND
COLOUR MATCH OPTIONS



VERTICAL AND HORIZONTAL
ABSEIL SYSTEM



PRODUCT INFORMATION

The EdgeSeil™ Abseil Rail is a hi-tensile aluminium track that wraps around the edge of the building providing continuous uninterrupted rope access to the facade

The track has arcs and corners that can be altered to the building shape. It allows complete vertical and horizontal access without the need to disconnect.

The track uses a traveller with 6 stainless steel bearings which allow the users to glide across.

EdgeSeil™ rail is typically supplied in 3m, 4m, and 6m sections or made to order based on the project requirements.

EdgeSeil™ rail has a range of fixing options, it can be side fixed or top fixed to a substrate, such as structural steel or concrete.

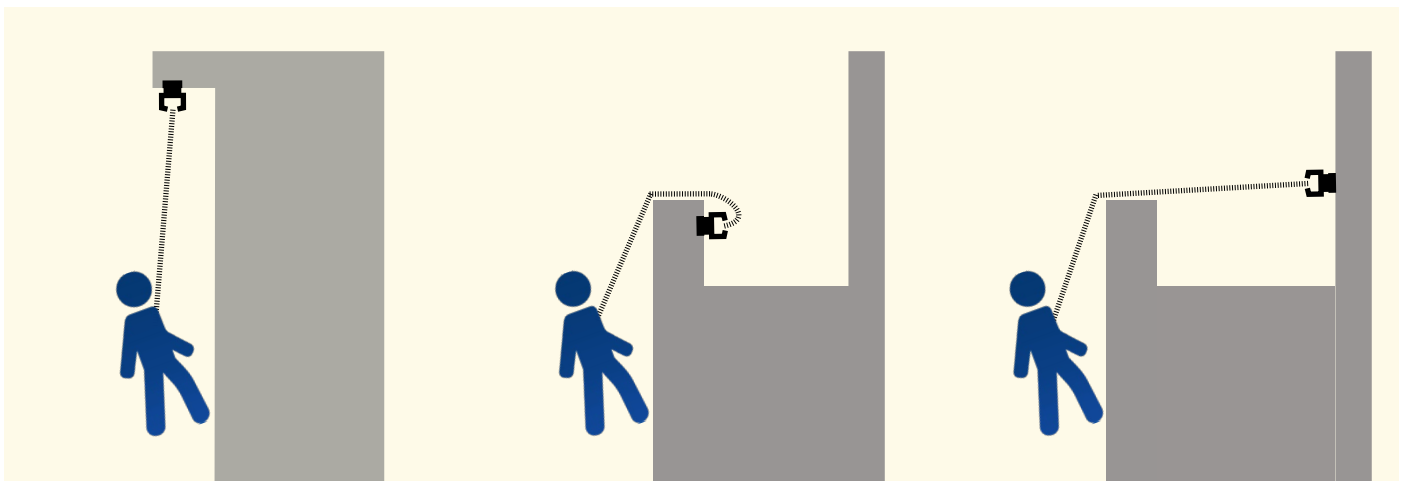
The abseil system is ideal for areas with large windows, complex facade designs which require regular maintenance and cleaning both internally and externally.

Product is used in shopping centres, hotels, high-rise office buildings, and maintenance of warehouses and hangars, inside and out.

The rail has a very low visual impact compared to other systems and BMU's that not only take up more space but also have a negative impact on building aesthetic.

As EdgeSeil™ follows the edge of the building it makes it an ideal choice for complex modern building designs.

APPLICATIONS



OVERHEAD
SYSTEM

PARAPET
MOUNTED

PLANT / LOUVRES
OR STEEL WORK

LINKED SYSTEMS

FALLSECURE TRACK

SOLSEIL BRISE SOLEIL

WEATHER LOUVRES



“The versatility of the Sayfa abseil rail was a key aspect of the projects facade access solution. The experience, knowledge and commitment of the installation team helped us achieve PC on time.”

Design Manager, Hilton Curio London

DESIGN & INSPECTION

All support steels and the connection to the building construction must be designed to an ultimate force of 15 - 33kN depending on the number of users.

It is a legal requirement for abseil rail systems and accessories to be regularly inspected and maintained.

This must be performed by a certified and competent individual at least once every 6 months or sooner if subject to extreme conditions such as heavy use or harsh weather.

A list of approved retest partners is available on the Sayfa Group website. These partners are

able to provide regular maintenance and safety retests for EdgeReil™ carried out in line with the manufacturers recommended guidelines.

These partners will help keep you compliant with detailed reporting and testing according to LEEA recommendations.



GET IN TOUCH

SAYFAGROUP.CO.UK

ENQUIRIES@SAYFAGROUP.CO.UK

UNIT B1 - RESEARCH POINT
SHEPSHED,
LEICESTERSHIRE,
LE12 9NH

+44 1509 509 273

