



EdgeReil™

Operating Manual

FallSecure™ Track & EdgeSeil™ Rail

Table of contents

| | |
|--------------------------------------|-----------|
| Product Overview | 3 |
| FallSecure™ Track Overview | 4 |
| EdgeSeil Rail™ Track Overview | 5 |
| Operation | 6 |
| Safe Use & Maintenance | 8 |
| FallSecure™ track system | 9 |
| EdgeSeil™ system | 10 |
| Fixing configurations | 11 |
| Fallsecure track, drop rod | 11 |
| Fallsecure track, to concrete | 11 |
| Fallsecure track, with L-brackets | 12 |
| Edgereil, drop rod | 12 |
| Edgereil, with L-brackets | 13 |
| Maintenance | 14 |
| Technical Specification | 17 |

Product Overview

EdgeReil™ is a collective term for the Sayfa Group rigid safety track, which can be supplied as a FallSecure™ fall restraint or arrest track and EdgeSeil™ abseil rail for rope access.

The systems are effectively monorail solutions and primarily offer increased safety and functionality compared to other height safety options, with the risks of pendulum or user error either much reduced or eliminated entirely.

This group EN795:2012 / 8610:2017 Type D systems provide significant lifetime cost savings in comparison to traditional Davit socket and Arm arrangements. As an Abseil system it is

They also have the potential to reduce ongoing Statutory Inspection and LOLER as well as minimise disruption and times for ground level cordoning. It is generally accepted these systems are between 8 and 20 faster than conventional davit sockets.

Any deviation attachments are also referred to as an EdgeReil product. Deviation attachments include twin rails to parapet for more conventional davit or 'a frame' rail mounted davits mounted to steel work.

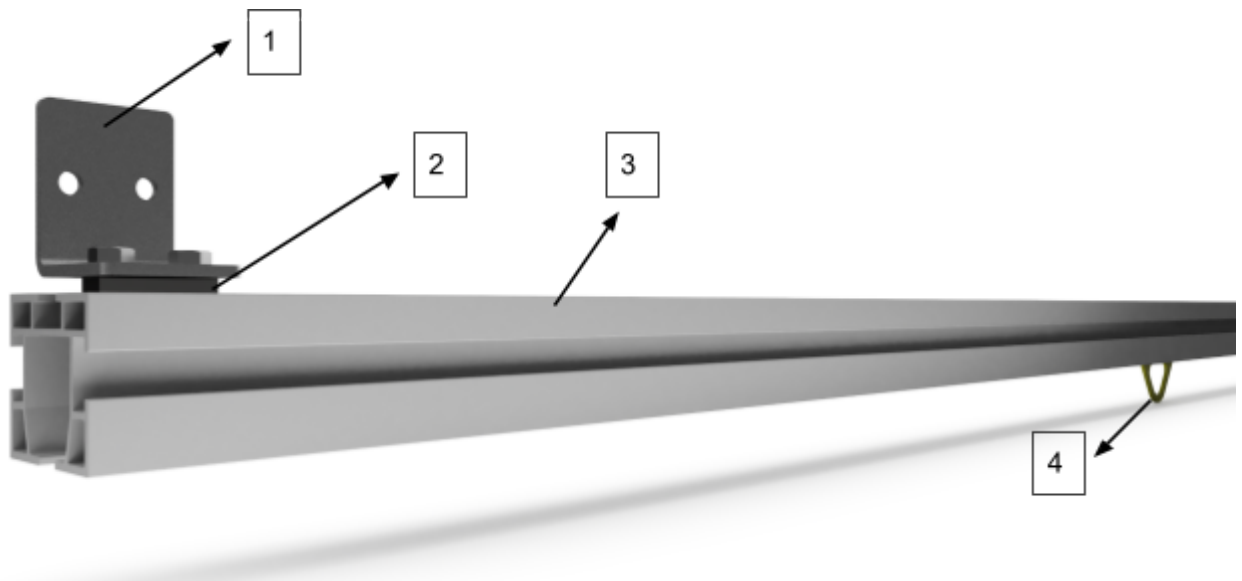
EdgeReil enable single system deployment for fall restraint roof inspections and facade access by rope access descent.

FallSecure™ Track Overview

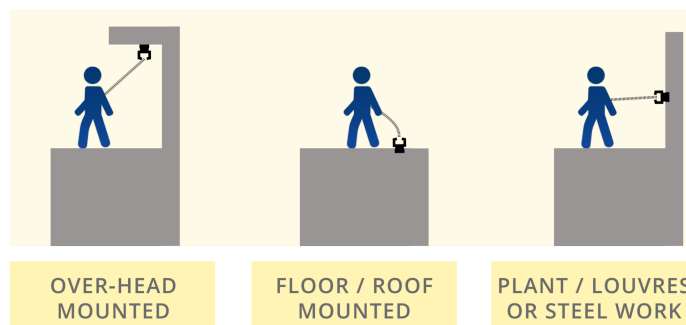
FallSecure™ can be used as fall restraint and fall arrest. It is designed and SATRA tested for 3 users, rated to 15kN and in compliance with EN 795: 2012, PD CEN/TS 16415 and BS8610:2017.

Component Key

1. Fixing bracket
2. T-Nut
3. Track
4. Traveller / Trolley for rope access

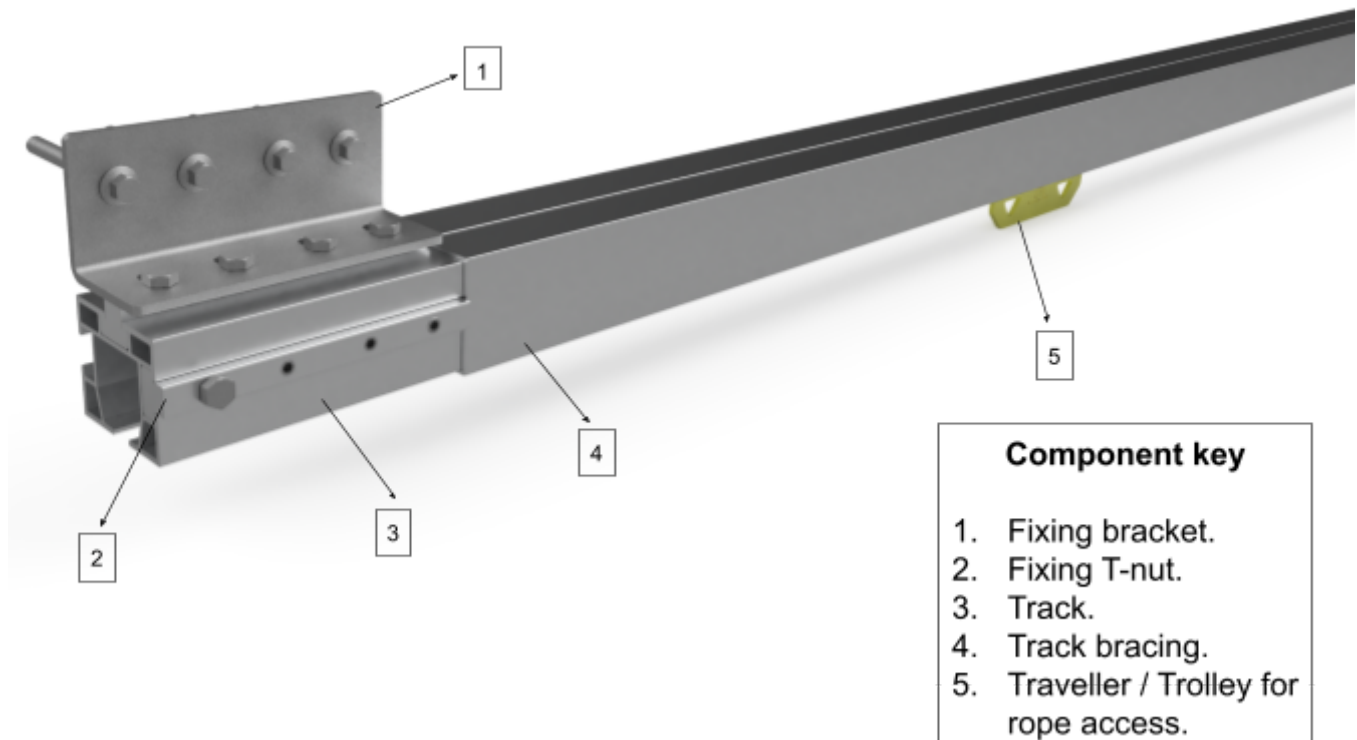


Applications

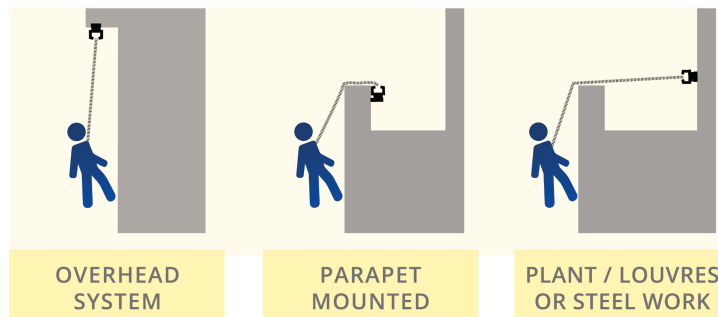


EdgeSeil Rail™ Track Overview

EdgeReil™ is intended as face access / rope access, a BS8610:2017 Type . It is designed and SATRA tested for 3 users, rated to 27kN and in compliance with EN 795: 2012, PD CEN/TS 16415, BS8610:2017.



Applications



Operation

- Ensure that operating instructions have been read and fully understood prior to commencing work with EdgeReil™.
- EdgeReil™ is designed and tested for a maximum of 3 users to BS8610:2017, with a safe working limit of 600Kg.
- FallSecure™ track is designed and tested for a maximum of 3 users to BS8610:2017 / PD CEN/TS 16415, with a safe working limit of 300Kg.
- The Supervisor of EdgeReil™ rigging must have a minimum level 3 IRATA qualification for rope access systems.
- Users of EdgeReil™ must be IRATA level 1 or 2 trained, competent and experienced in the method of work. They must be trained in the safe use of the system.
- Periodic inspection and maintenance is required for EdgeReil™. It must not be used if it has an overdue service date.
- EdgeReil™, its components and the structure to which it is attached to must be inspected for signs of deterioration and deformation prior to use. It must not be used if deterioration and deformation are present.
- If the system has been damaged or arrest has occurred due to a fall, ensure that it is not used again until it has been inspected and recertified.
- Ensure that fixings and components are securely fastened. Any adjustments required will need to be performed by a height safety inspector.
- Should rope lines pass over an edge, then rope protectors must be used.
- There must always be 2 people during the operation of the system. In the event of an emergency, one person can provide rescue assistance and first aid.

- Do not tamper with, modify or remove any part of this system unless authorised by Sayfa Group.
- The system, its components and the structure to which it is attached to must be inspected for signs of deterioration and deformation prior to use. It must not be used if deterioration and deformation are present.

Safe Use & Maintenance

- Please note the Operation requirement for Safe Use.
- EdgeReil™ Davit is rated for 2 users with a safe working load of 600 Kg.
- FallSecure™ track is rated 3 users with a safe working load of 300 kg.
- EdgeSeil™ rail is rated to for 3 users to 27KN BS 8610:2017 with a safe working load of 900kg.
- The Rail is essentially maintenance free however any debris should be cleared during the annual inspection. Any contamination of the surface should be wiped clear.
- Please refer to our LOLER guidance for further testing / recertification guidance.
- Annual inspection of the FallSecure system is required to be performed by a LOLER competent individual, our recommendation by a LEEA or WAHSA member company. The recommended intervals for the conditions below:

EN ISO 12944-2 C1 – C3 Environments : Intervals of 12 months

EN ISO 12944-2 C4 – C5 Environments : Intervals of 6 months*

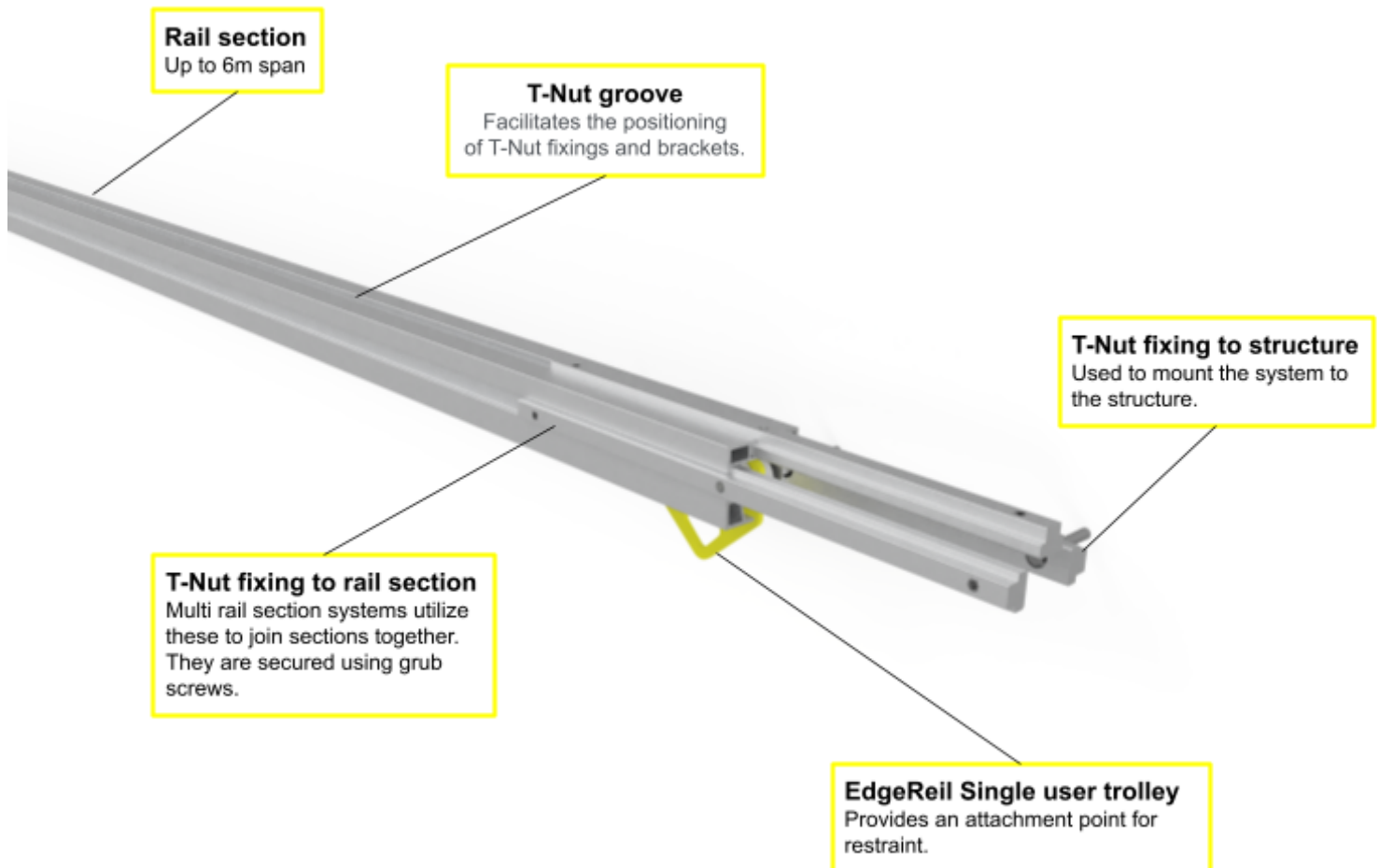
- Recertification of the EdgeSeil system is required to be performed by a LOLER competent, our recommendation by a LEEA or WAHSA member company. The recommended intervals for the conditions below:

EN ISO 12944-2 C1 – C3 Environments : Intervals of 6 months

EN ISO 12944-2 C4 – C5 Environments : Intervals of 3 months*

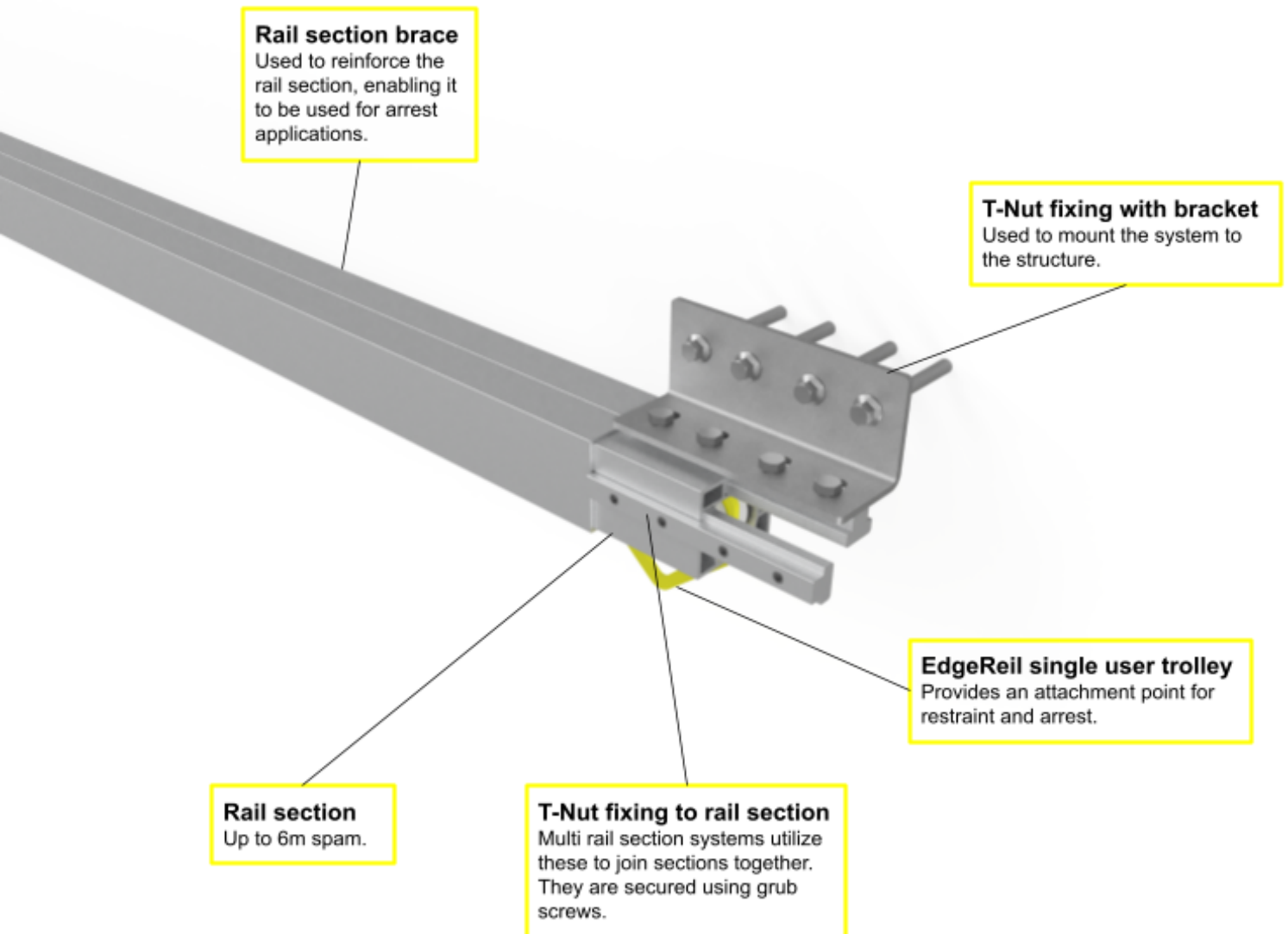
*For these environments please contact Sayfa group for product finishing options enquiries@sayfagroup.co.uk

FallSecure™ track system



Fallsecure™ is a fall restraint system which can be mounted to the floor, parapet or primary / secondary steel work, providing safe access for maintenance across the roof. It is suitable for 3 users per system.

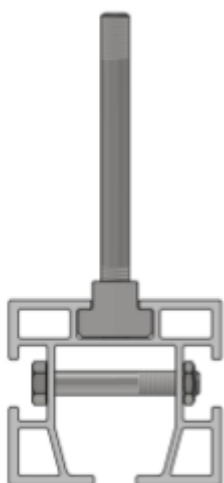
EdgeSeil™ system



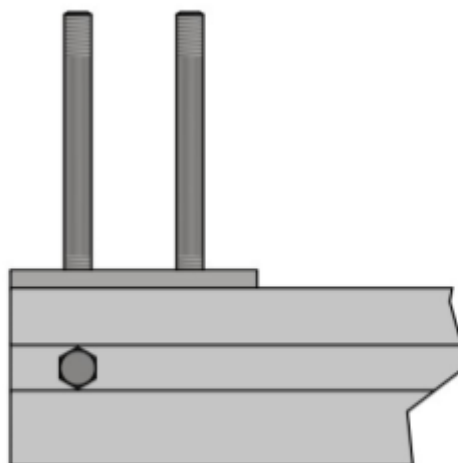
EdgeSeil™ is an abseil rail system which allows users continuous horizontal and vertical access across building facade. It is suitable for 3 users and allows uninterrupted access across the building facade.

Fixing configurations

Fallsecure track, drop rod



Front view

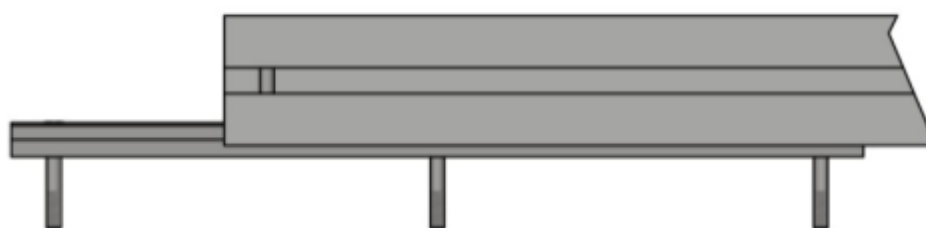


Side view

Fallsecure track, to concrete

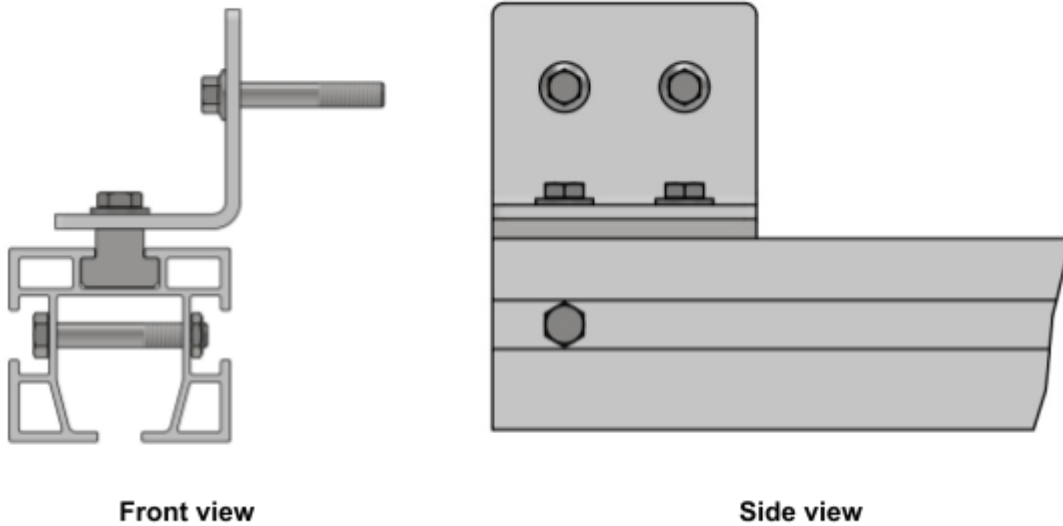


Front view

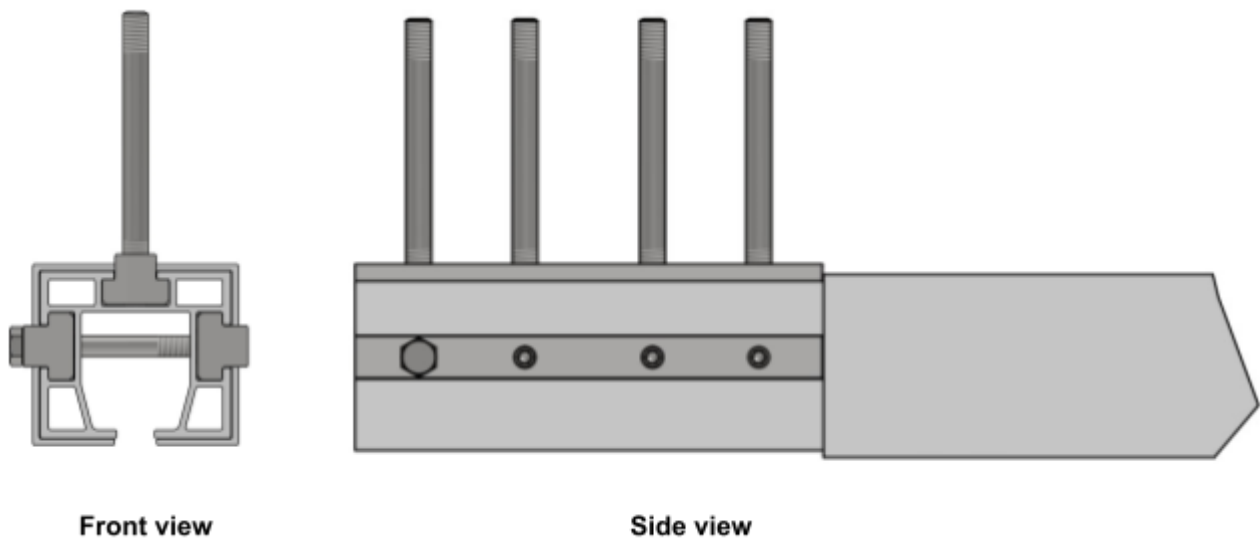


Side view

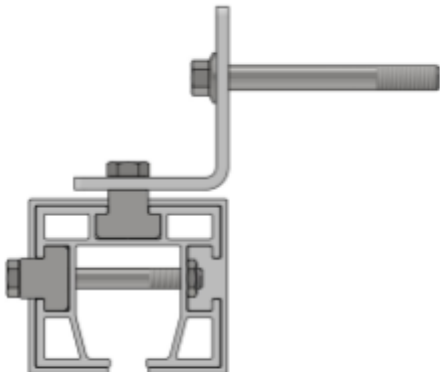
Fallsecure track, with L-brackets



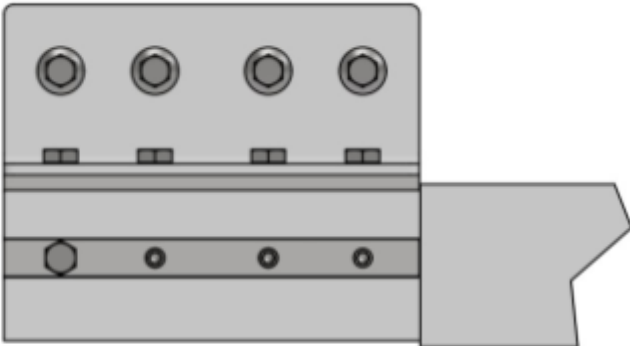
Edgereil, drop rod



Edgereil, with L-brackets



Front view



Side view

Maintenance


EdgeReil™ must be assessed and recertified by a competent person as defined under the Lifting Operations and Lifting Equipment Regulations 1998 and at intervals of 6 months or less if specified by the manufacturer.



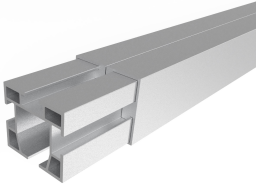
EdgeReil™ must be cleaned using a damp or dry cloth. Chemicals which can damage its components must never be used.

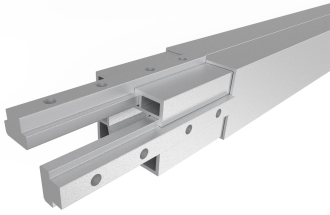

If there is evidence of deterioration or deformation due to overloading of the system, then it must be reported to the responsible person.

A record of inspections must be kept up to date.

The following checklist outlines the criteria for ensuring the safe use of the davit system. The system must be maintained by a height safety inspector.

| Component | Inspection criteria | Pass Y/N | Action taken | Date |
|---|--|-------------|-----------------|------|
|  | <p>EdgeReil trolley</p> <p>Inspect the trolley and ensure that there is no deformation or elongation due to overloading.</p> <p>Ensure that the bearings function correctly.</p> <p>Ensure that there is no deterioration on any part of the trolley.</p> <p>Ensure that information is clearly identifiable.</p> | | | |

| | | | | |
|---|---|--|--|--|
|  | <p>Brackets Inspect the bracket and ensure that there is no deterioration of the bracket.</p> <p>Ensure that there is no elongation or deformation of the bracket or the fixing holes.</p> | | | |
|  | <p>Quick release pin Inspect the quick release pin and ensure that there is no deformation or deterioration due to arrest or overloading of the system.</p> <p>Ensure that the detent ball is not damaged and functions correctly.</p> | | | |
|  | <p>Rail section / Rail section brace Inspect the rail section and rail section brace and ensure that there is no deterioration of either part.</p> | | | |

| | | | | |
|---|--|--|--|--|
|  | <p>T-nut fixings Inspect the rail section and rail section brace and ensure that there is no deterioration present.</p> | | | |
|  | <p>Fixings Inspect the fixings and ensure that there is no deterioration present.</p> | | | |

Technical Specification

All EdgeReil systems are manufactured from 6082-T6 structural aluminium, 316 grade stainless steel and A4-80 grade fixings.

Finishing options include AA-20 anodising or polyester powder coating.

Dimensions

Code: FST.0079.091.3U

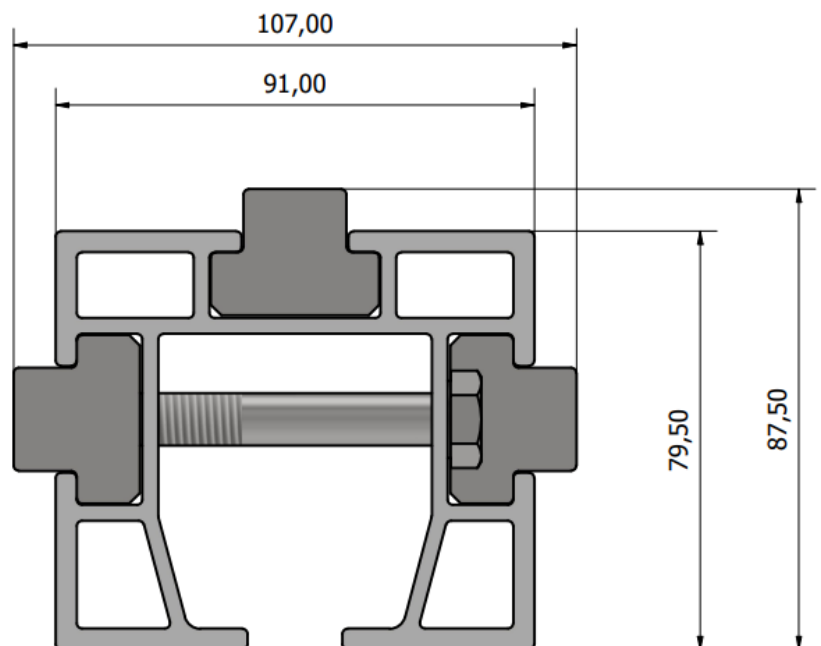
Width: 91 mm

Height: 79.5 mm

Unit weight: 4.2 Kg/m

Rating: 15 KN

Safe working load: 300 KG



Dimensions

Code: ESR.0085.097.3U

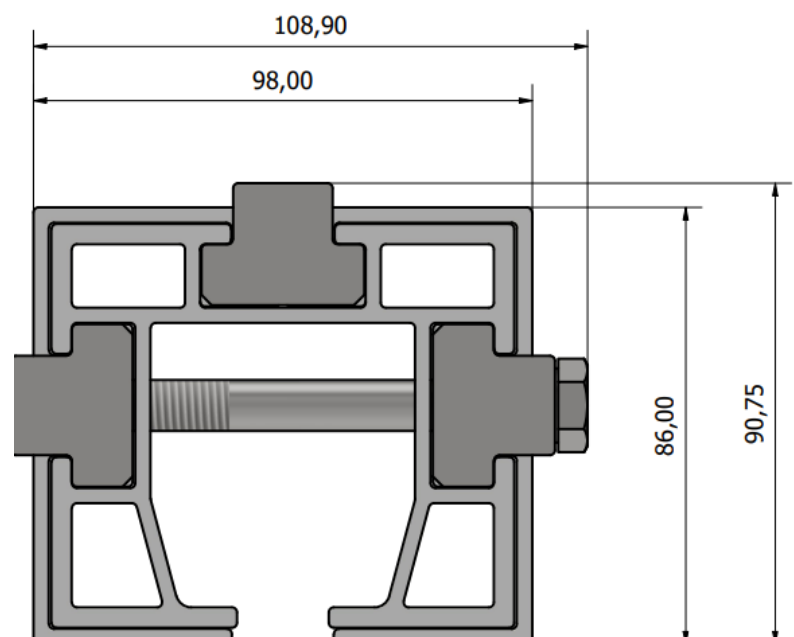
Width: 98 mm

Height: 86 mm

Unit weight: 9.5 Kg/m

Rating: 27 KN

Safe working load: 900 KG



Dimensions

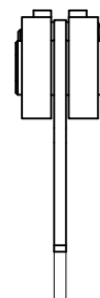
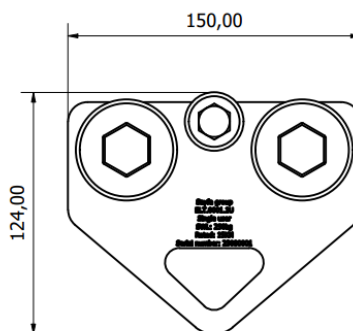
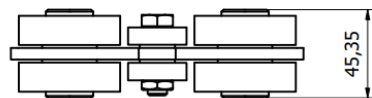
Code: ELT.0001.1U

Width: 150 mm

Height: 124 mm

Rating: 15 KN

Safe working load: 100 KG



Dimensions

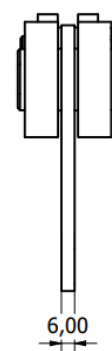
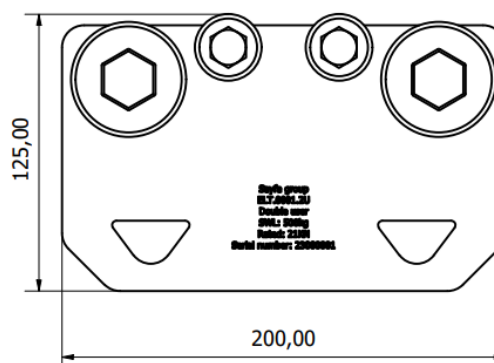
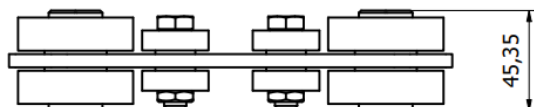
Code: ELT.0001.2U

Width: 200 mm

Height: 125 mm

Rating: 21 KN

Safe working load: 300 KG



Dimensions

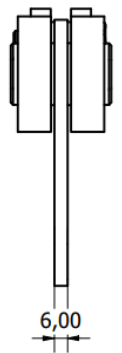
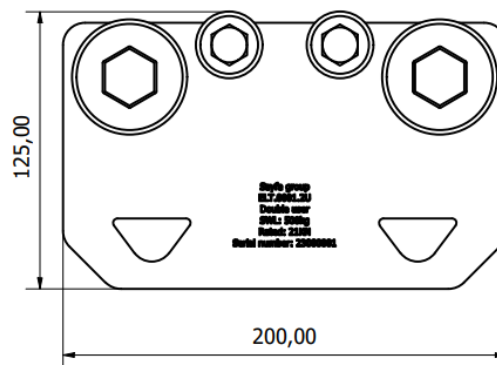
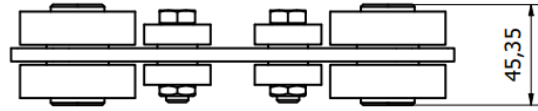
Code: ELT.0002.2U

Width: 200 mm

Height: 119 mm

Rating: 21 KN

Safe working load: 300 KG



Material specification

A4/1.4401 ball bearing trolley

A4/1.4401 brackets

A4/1.4401 A70 Grade M16 Bolts

A4/1.4401 A70 Grade M16 Pins

6082-T6 Structural Aluminium Main and Bracing Sections

'MF' Indicates the product has is Mill Finish

'AF' Indicates the product has an AA20 Anodised Finish

'EP' Indicates the Stainless Steel has been electropolished

Installation / fixings

-Fallsecure track is tested fixed into 150mm C30/35 concrete, 65mm deep with no rebar reinforcement within the sample area.

-Edgeseil track is tested fixed into 150mm C30/35 concrete, 95mm deep with no rebar reinforcement within the sample area.

Test standards

- BS EN 795 Personal fall protection equipment. Anchor devices.
- PD CEN/TS 16415 Personal fall protection equipment. Anchor devices. Recommendations for anchor devices for use by more than one person simultaneously.
- BS 8610 Personal fall protection equipment. Anchor systems.

Related standards

- BS 7883 Code of practice for the design, selection, installation, use and maintenance of anchor devices conforming to BS EN 795.
- BS 7985 Code of practice for the use of rope access methods for industrial purposes.
- BS ISO 22846 Personal equipment for protection against falls.
- BS 8437 Code of practice for selection, use and maintenance of personal fall protection systems and equipment for use in the Workplace.

Testing

Testing and performance are in accordance with BS EN 795 Personal fall protection equipment, PD CEN/TS 16415 Personal fall protection equipment, and BS 8610 Personal fall protection equipment.

Product warranty

'MF' Mill Finish

15 Years Standard Warranty

30 Years SAYFA+ Warranty

'AF' Anodised Finish / 'EP' Trolley Finish

30 Years Standard Warranty

60 Years SAYFA+ Warranty

Please refer to the Warranty Application available on www.sayfagroup.co.uk.



GET IN TOUCH



SAYFAGROUP.CO.UK

ENQUIRIES@SAYFAGROUP.CO.UK

UNIT B1 - RESEARCH POINT
SHEPSHED,
LEICESTERSHIRE,
LE12 9NH



+44 1509 509 273

