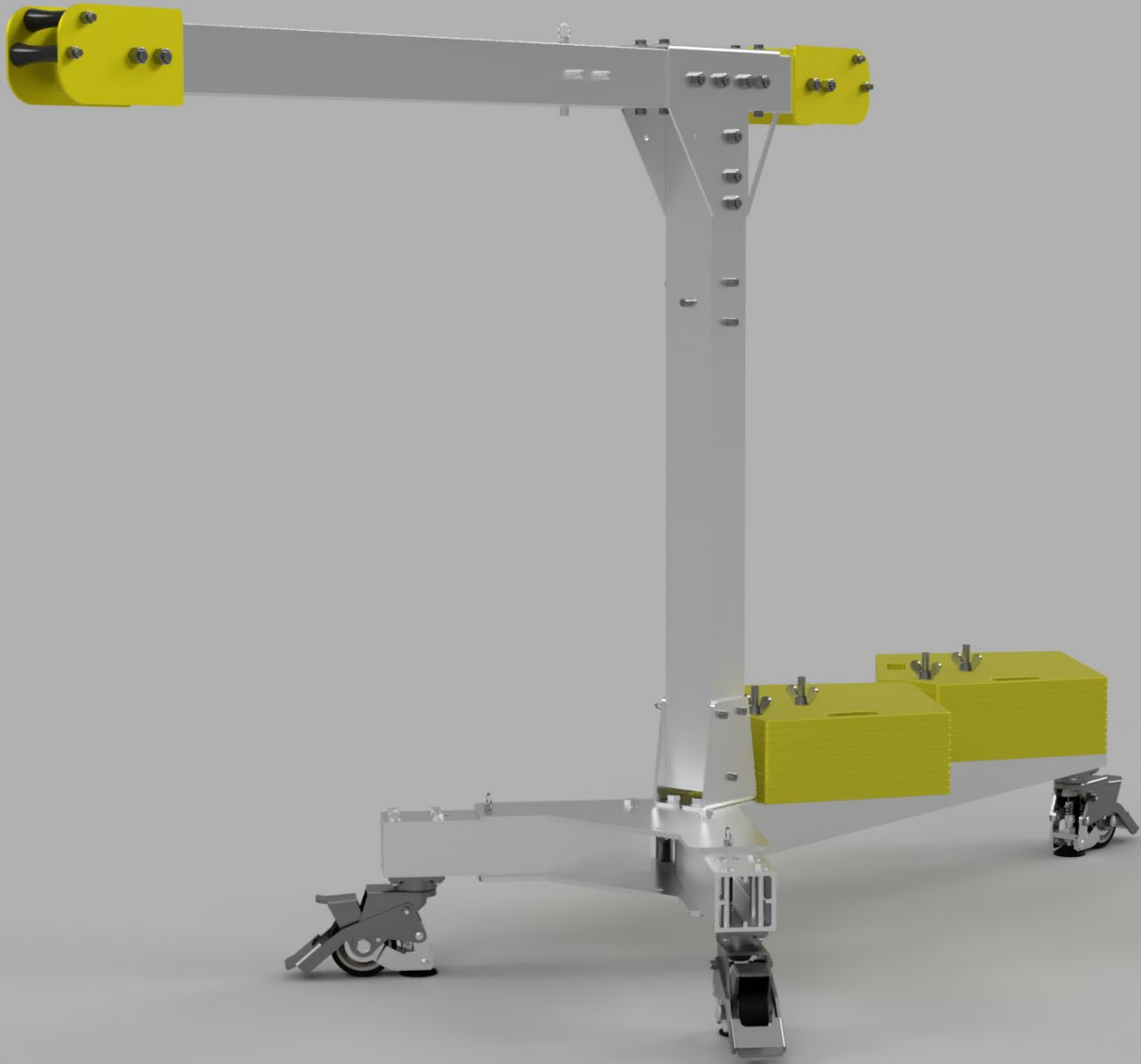


WORK POSITIONING



SAYFAGROUP.CO.UK

SAYFA 

EDGESEIL™

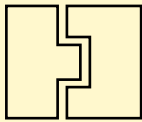
MOBILE DAVIT SYSTEM

PORTABLE, FREE STANDING MOBILE DAVIT SYSTEM FOR ABSEIL

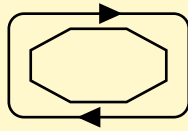
Edgeseil™ is a portable Davit or rope access system, suitable for personnel and materials lifting or lowering.

The range includes a mobile variant with portable weights or wheeled with bearing based castors which can be moved fully weighted. It has a compact footprint and is available as a single or two user system.

Each wheeled option has a footed operated, locking and levelling castors to plant the system during use.



**MODULAR
DESIGN AND EASY
ASSEMBLY**



**SAFE USE HEAVY
DUTY LOCKING
CASTORS**



**INDEPENDENTLY
TESTED TO
EN795:2012**



**SAFE WORKING LOAD: 1
USER 100KG. 2 USER 200KG.**



**EASILY ASSEMBLED FROM
ALMOST FLAT FOLDED FORM.**



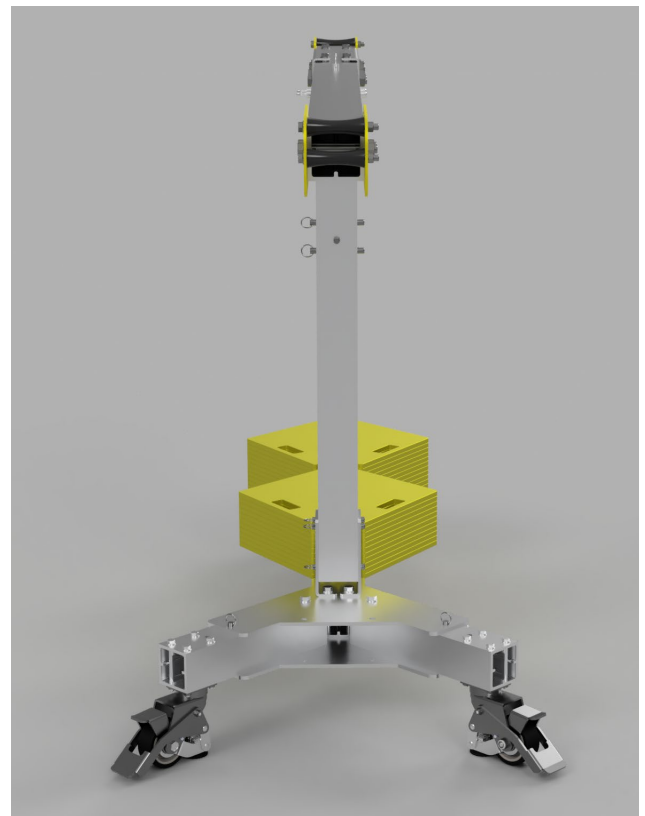
**NO TOOLS REQUIRED FOR
ASSEMBLY.**



**FREE STANDING AND FREE
WHEELING.**



**NO PENETRATION REQUIRED
TO ROOF SURFACE.**



PRODUCT INFORMATION

Edgeseil™ Mobile Davit is suitable for storing inside or out, moving from project to project or permanently sitting. All Edgeseil™ mobile units offer quick tool less assembly and is demountable to almost flat.

All structural elements are manufactured from extruded 6082-T6 aluminium with an anodised finish and 316 stainless steel either satin finished or powder coated safety level.

The unit is assembled from only three interlocking components and a total nine stainless detent pins which are also 316 stainless steel and has a footprint

of only 989mm W x 1935mm L. There are either 16 or 24 individual weights each 21kg for one user or two user respectively.

These weights are manufactured from S275 mild steel, bright zinc plates and polyester powder coated for increased durability.

Edgeseil™ Mobile Davit is tested to EN795:2012 Type B (no structural fixing for anchor) and E requirements (mass or friction based anchor).

There must always at least 2 people present in the assembly and

operation of the system to comply with manual handling and safe rescue.

Please refer to our Operating Manual for more detailed information such as specific sizes and weights as well as user instruction and inspection guidelines.

Edgeseil™ Mobile Davit is tested to EN795:2012 Type B (no structural fixing for anchor) and E requirements (mass or friction based anchor). This was undertaken in wet and dry conditions as well as up to a 5 degree pitch.

PRODUCT RANGE



ESW.1500.3800.1U



ESW.1500.3800.2U

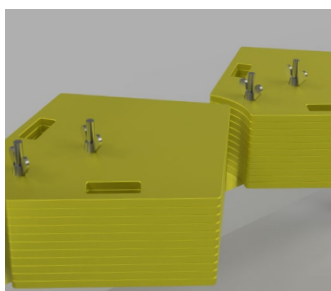


ESW.1500.3800.1U



ESW.1500.3800.2U

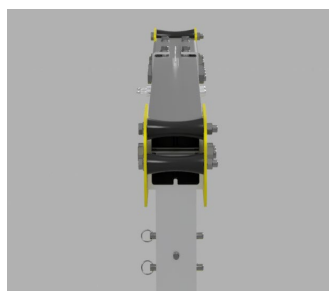
KEY FEATURES



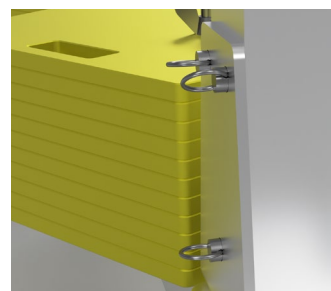
TOOL FREE ASSEMBLY WITH WINGNUTS



FOOT OPERATED CASTORS



NYLON ROLLERS FOR SMOOTH ABSEIL



DETENT PINS FOR TOOL FREE ASSEMBLY



GET IN TOUCH

SAYFAGROUP.CO.UK

ENQUIRIES@SAYFAGROUP.CO.UK

UNIT B1 - RESEARCH POINT
SHEPSHED,
LEICESTERSHIRE,
LE12 9NH

+44 1509 509 273

